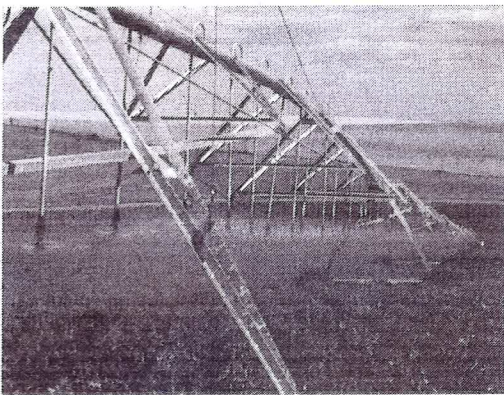
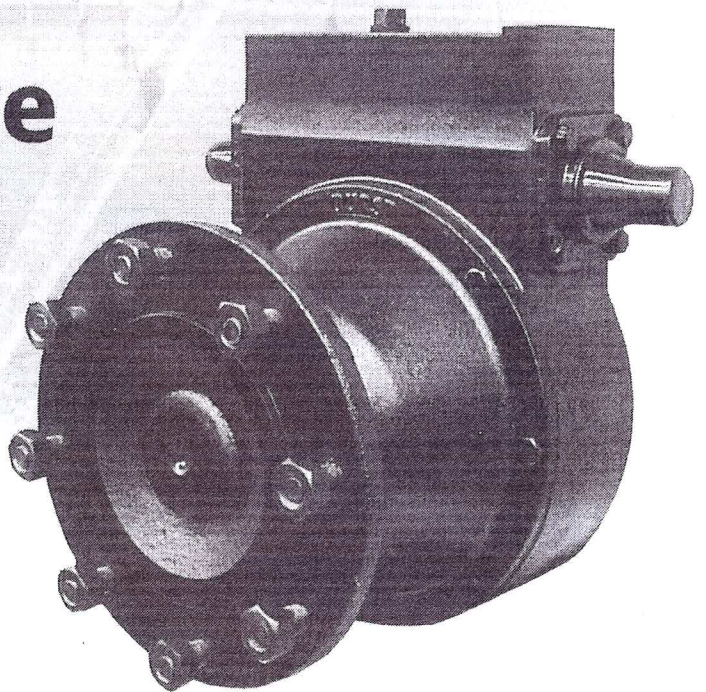


# DURST

## Heavy-Duty Wheel Drive

### DURST GEARBOX FEATURES

- Heavy-Duty Gearbox with Universal Mounting
- Totally Enclosed Internal Air Expansion Chamber
- High Tensile Strength Worm Shaft
- Most Durable Worm Gear Available
- One-Piece High Strength Output Shaft
- Heavy-Duty Taper Roller Bearings
- Extreme-Duty Ductile Iron Endcaps



- New Self-Contained Cartridge Style Input and Output Shaft Seals Eliminating Oil Leaks
- Plated Steel Cover for Protection of Unused Input Shaft
- Dyno-Lab Testing Proves the New Durst-Designed A1339 Wheel Drive is 30% Stronger than the Competition
- Date Coded Unit for Accurate Warranty
- ISO 9000 Registered Factory Featuring Rigid Quality Control Standards

***The Leader in Design and Quality for over 40 Years***

**AIE**

**AMARILLO INDUSTRIAL  
ELECTRIC, INC.**



**Cody Ash**  
Sales Representative

2829 Mays Avenue  
Amarillo, Texas 79109  
cash@suddenlinkmail.com

Cell (806) 316-2908  
Bus. Phone (806) 353-6646  
Toll Free 1-800-753-5550  
FAX (806) 353-3230